



**-The original certification question!**

<https://www.it-exams.com>

**Exam Number/Code:**98-366

**Exam Name:** MTA Networking  
Fundamentals

**Version:** Demo

1. Identify whether the given statement is true or false.

"In a bus topology, when a computer transmits its data, the signals travel in both directions on the bus until they reach both ends."

- A. False
- B. True

**Answer: B**

2. Identify whether the given statement is true or false.?

"A switch passes data based on the MAC address."

- A. True
- B. False

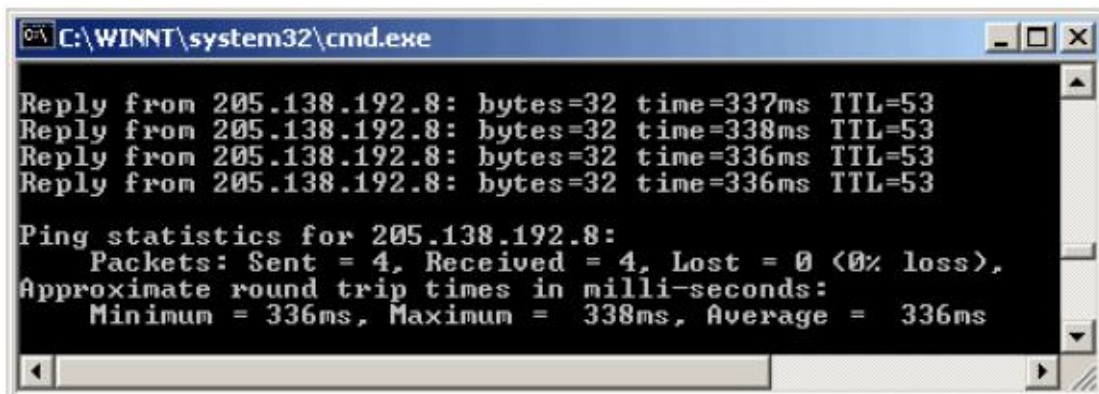
**Answer: A**

3. The \_\_\_\_ layer provides access to the network for applications and certain user functions. It displays incoming information and prepares outgoing information for network access.

- A. Transport
- B. Network
- C. Physical
- D. Session
- E. Data-link
- F. Application

**Answer: F**

4. Which of the following utilities will produce the output as shown in the image below?



```
C:\WINNT\system32\cmd.exe
Reply from 205.138.192.8: bytes=32 time=337ms TTL=53
Reply from 205.138.192.8: bytes=32 time=338ms TTL=53
Reply from 205.138.192.8: bytes=32 time=336ms TTL=53
Reply from 205.138.192.8: bytes=32 time=336ms TTL=53

Ping statistics for 205.138.192.8:
    Packets: Sent = 4, Received = 4, Lost = 0 (0% loss),
    Approximate round trip times in milli-seconds:
        Minimum = 336ms, Maximum = 338ms, Average = 336ms
```

- A. PING
- B. NETSTAT
- C. TRACERT
- D. NBTSTAT

**Answer: A**

5.Which of the following is a function of a WINS server on a network?

- A. Assigning virtual memory to the server.
- B. Assigning IP addresses.
- C. Converting host names to domain names.
- D. Converting NetBIOS names to IP addresses.
- E. Assigning computer names.

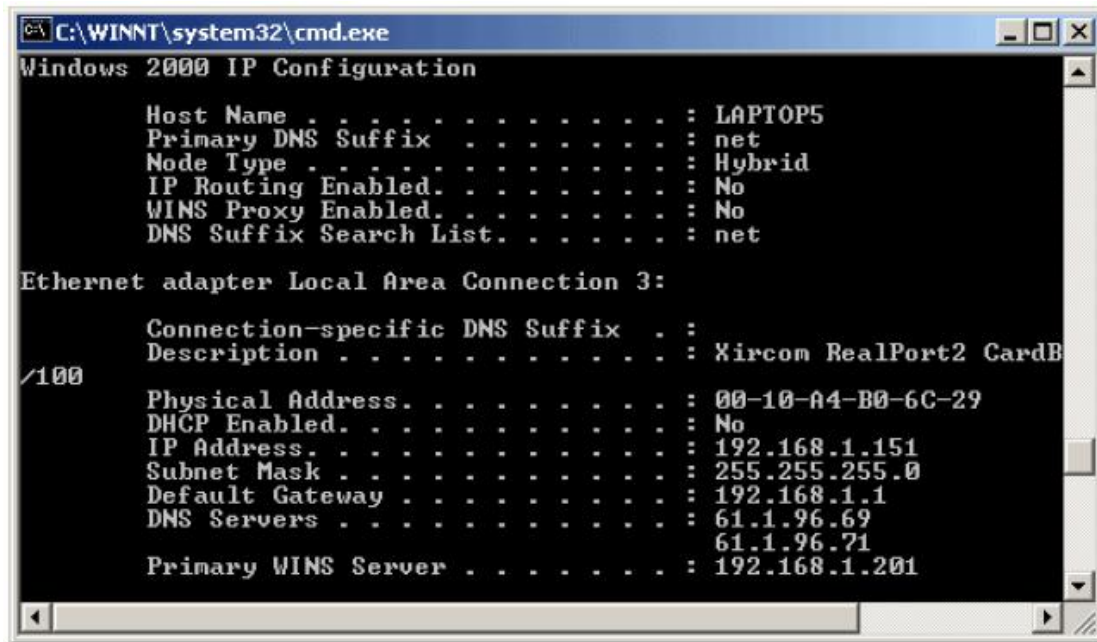
**Answer: D**

6.Which of the following services is required in a routed network to communicate with the DHCP server on another segment?

- A. DHCP
- B. RIS
- C. DNS
- D. DHCP relay agent
- E. WINS

**Answer: D**

7.Which of the following utilities will produce the output as shown in the image below?



- A. NBTSTAT
- B. IPCONFIG
- C. PING
- D. NETSTAT

**Answer: B**

8. In the FDDI network, each network node is connected to a central cabling nexus called a \_\_\_\_\_.

- A. Concentrator
- B. Gateway
- C. Repeater
- D. Transceiver
- E. NIC
- F. Bridge

**Answer: A**

9. Which of the following devices is required for remotely accessing the network through PSTN lines?

- A. Hub
- B. Bridge
- C. Switch

- D. Modem
- E. Gateway
- F. Router

**Answer: D**

10. PRI, a form of ISDN, can provide transmission rates of up to \_\_\_\_.

- A. 1.544Mbps
- B. 16Kbps
- C. 128Kbps
- D. 64Kbps

**Answer: A**

11. Which of the following standards uses twisted pair cabling?

- A. 10Base5
- B. 10BaseT
- C. 100BaseSX
- D. 100BaseFX

**Answer: B**