

Exam Number/Code:1Z0-141

Exam Name:Oracle9i forma
Developer:build internet applications

Version: Demo

<http://www.it-exams.com>

QUESTION NO: 1

View the Exhibit.

You have created three list items, each of which is in a different list style. You have defined the same four list elements for each list item. The exhibit depicts the list items at run time after user input.



What is the list style of each list item?

- A. List 1: Tlist; List 2: Combo box; List 3: Poplist
- B. List 1: Poplist; List 2: Tlist; List 3: Combo box
- C. List 1: Combo box; List 2: Poplist; List 3: Tlist
- D. List 1: Combo box; List 2: Tlist; List 3: Poplist
- E. List 1: Poplist; List 2: Combo box; List 3: Tlist
- F. List 1: Tlist; List 2: Poplist; List 3: Combo box

Answer: E

QUESTION NO: 2

Which statement about the Data properties of a text item is true?

- A. If you set the Required property to Yes for an item whose corresponding database column does not have a NOT NULL constraint, you will receive an error at run time.
- B. If the Data Length Semantics property is set to BYTE, you may need to manually adjust the Maximum Length property depending on the character set that is being used.
- C. You can set the Initial Value for an item outside the range of values specified by the Lowest Allowed Value and the Highest Allowed Value properties because Initial Value defines an exception to that range.
- D. If the Maximum Length of an item is set to a value that is greater than the value for Width, the item will not be displayed at run time.

Answer: B

QUESTION NO: 3

The database EMPLOYEEES table has a foreign key constraint referencing the DEPARTMENTS table.

You are developing a Human Resources application. HR clerks use the Employees form to query, update, and insert employee records. They occasionally attempt to add an employee who is in a new department that has not yet been entered into the database. When this happens, they receive an error indicating that the parent record cannot be found, so they cannot commit the employee record.

The HR clerks have requested that you place a button on the form to enable them to invoke the Departments form to enter the new department and save it independently. Then they want to be able to return to the Employees form and decide whether or not to save the new employee record.

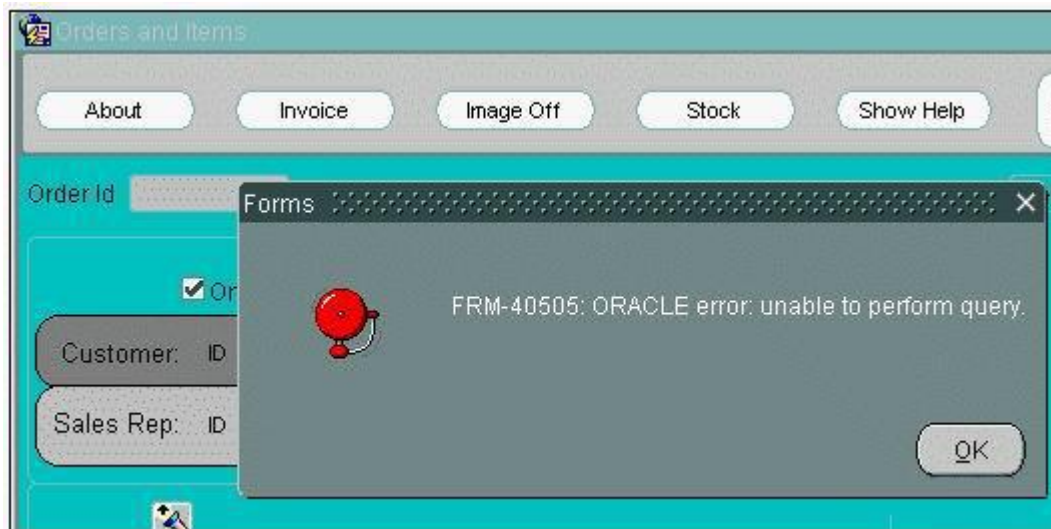
How should you code the When-Button-Pressed trigger to achieve this?

- A. `NEW_FORM('Departments');`
- B. `OPEN_FORM('Departments',NO_ACTIVATE,NO_SESSION);`
- C. `OPEN_FORM('Departments');`
- D. `CALL_FORM('Departments');`
- E. `POST;`
- `NEW_FORM('Departments',FULL_ROLLBACK);`
- F. `CALL_FORM('Departments',NO_HIDE);`
- G. `OPEN_FORM('Departments',ACTIVATE,SESSION);`

Answer: G

QUESTION NO: 4

View the Exhibit.



You are developing an Order Entry form. The When-New-Form-Instance trigger executes a query on the only block in the form. Instead of the alert shown in the exhibit, when the query cannot be performed you want to display to the user a message with the actual database error that is received.

What can you do to implement this?

A. Add this exception handler to the When-New-Form-Instance trigger:

```
EXCEPTION  
WHEN ERROR_CODE = 40505 THEN  
MESSAGE(SQLERRM);
```

B. In the When-New-Form-Instance trigger, insert this code after the EXECUTE_QUERY built-in:

```
IF NOT FORM_SUCCESS THEN  
message(SQLERRM);  
END IF;
```

C. Add this exception handler to the When-New-Form-Instance trigger:

```
EXCEPTION  
WHEN ERROR_CODE = 40505 THEN  
MESSAGE(DBMS_ERROR_TEXT);
```

D. In the When-New-Form-Instance trigger, insert this code after the EXECUTE_QUERY built-in:

```
IF NOT FORM_SUCCESS THEN  
message(DBMS_ERROR_TEXT);  
END IF;
```

E. Place this code in a form-level On-Error trigger:

```
IF ERROR_CODE = 40505 THEN  
message(DBMS_ERROR_TEXT);  
END IF;
```

F. Place this code in a form-level On-Error trigger:

```
IF ERROR_CODE = 40505 THEN  
message(SQLERRM);  
END IF;
```

Answer: E

QUESTION NO: 5

The Warehouse.fmb module contains two data blocks. You want to display items from each data block on separate content canvases. You must ensure that both content canvases are visible together at run time. Which two statements about content canvases are correct? (Choose two.)

A. A content canvas can be associated with a window by setting the Window property of the canvas.

B. Two or more content canvases can be displayed by associating each of them with a different window.

C. A window cannot display more than one content canvas during a run time session.

D. Two or more content canvases can be displayed by setting their viewports to be smaller than the window with which they are to be associated.

E. A content canvas can be associated with a window by setting the Primary Canvas property of the window.

F. A content canvas can be associated with two or more windows by setting the Primary Canvas property of the windows.

Answer: A,B

QUESTION NO: 6

The user must be able to invoke a list of values for valid sales representatives in the Orders form.

To facilitate this, you created a button and positioned it next to the Sales Rep Id field.

The text item has these properties set:

- Required: Yes
- List of Values: SALES_REP_LOV
- Validate from List: No

The button has these properties set:

- Keyboard Navigable: Yes
- Mouse Navigate: Yes
- Iconic: Yes
- Icon Filename: list.ico

An appropriate LOV has been created (called SALES_REP_LOV) and associated with the text item. An icon file (list.gif) exists in the appropriate directory. All other properties are left at their defaults.

You write a When-Button-Pressed trigger at the item level with this code:

```
LIST_VALUES;
```

To test the form, you attempt to enter a new record. What is the run-time behavior of the form?

- A. The icon is not displayed on the button. When you click in the Sales Rep Id field and then click the button, the LOV is not invoked and an error is reported.
- B. The icon is displayed on the button. When you click in the Sales Rep Id field and then click the button, the LOV is invoked.
- C. The icon is not displayed on the button. When you click in the Sales Rep Id field and then click the button, the LOV is invoked.
- D. The icon is displayed on the button. When you click in the Sales Rep Id field and then click the button, the LOV is not invoked and an error is reported.
- E. The form doesn't compile and therefore cannot be tested.

Answer: A

QUESTION NO: 7

During testing, you received comments that the default functionality of the [Commit] key can cause an error message to be displayed if there are no changes to save when it was activated.

You decide to provide a button for users to validate the form and issue a commit if necessary. To implement this, you write a form-level procedure called `VALIDATE_AND_COMMIT`.

The same functionality must be provided when the user chooses File > Save from the menu or presses the [Commit] key.

Which should you use?

A. The When-Button-Pressed trigger with the code

`DO_KEY('COMMIT_FORM');`

A form-level Key-Commit trigger with the code

`validate_and_commit;`

B. The When-Button-Pressed trigger with the code

`DO_KEY('[COMMIT]);`

A form-level Key-Commit trigger with the code

`DO_KEY('validate_and_commit');`

C. The When-Button-Pressed trigger with the code

`DO_KEY(commit);`

A form-level Key-Commit trigger with the code

`validate_and_commit;`

D. The When-Button-Pressed trigger with the code

`validate_and_commit;`

A form-level Key-Commit trigger with the code

`DO_KEY('COMMIT_FORM');`

E. The When-Button-Pressed trigger with the code

`DO_KEY('COMMIT_FORM');`

A form-level Key-Commit trigger with the code

`DO_KEY('COMMIT_FORM');`

`validate_and_commit;`

Answer: A

QUESTION NO: 8

View the Exhibit.

You are developing a form for a family-oriented video store. The form will run in query-only mode in a customer kiosk to show information about movies that are available to rent. The Rating item in the Movies block of the form shown in the upper portion of the exhibit displays the rating of the movie: G, PG, R, or X. Your customers are not interested in all these values, but they do want to see if the film is rated G to indicate that it is suitable for the whole family.

You decide to change the item to a check box to be displayed as shown in the lower portion of the exhibit. You want users to be able to query any movies, but only those with a G rating will have the check box selected.

You change the item type of the Rating item to Checkbox and set its Label, Value When Checked (G), and Prompt properties. However, when you run the form to test it and execute an unrestricted query, only those movies with a rating of G are displayed.

What do you need to change so that all movies are returned by the query and the check box properly shows the "For the Whole Family" rating?

The image shows two screenshots of a web form, labeled 'Original Display' and 'Desired Display', comparing the state of a 'Rating' field.

Original Display: The form contains three fields: 'Movie Id' with the value '4', 'Movie Name' with the value 'Snow White', and 'Rating' with a dropdown menu showing 'G'.

Desired Display: The form contains the same 'Movie Id' and 'Movie Name' fields. The 'Rating' field is now a checkbox labeled 'For the Whole Family', which is currently checked.

- A. Set the Update Allowed, Insert Allowed, and Delete Allowed Properties of the Movies block to No.
- B. Set the Initial Value property of the Rating item to G.
- C. Change the item type. You cannot use a check box for this application because there are more than two possible values for the item.
- D. Set the Checkbox Mapping of Other Values property of the Rating item to Checked.
- E. Set the Value When Unchecked property of the Rating item to null.
- F. Set the Checkbox Mapping of Other Values property of the Rating item to Unchecked.

Answer: F

QUESTION NO: 9

You want to create a calculated item in the Control block of the Human Resources form. This item will contain the total of employee salaries for employees in a particular department. Which statement is true about how to create the calculated item?

- A. You can create it by first creating a display item and then setting appropriate properties in its Calculation property group.
- B. You can create it by first creating a text item and then changing the item type.
- C. You can create it in the Layout Editor using a special tool that creates a calculated item.
- D. You can create it in the Layout Editor by selecting the Salary item of the Employees block, selecting the Control block from the block list, clicking the Text Item tool, and drawing a text item on the canvas to automatically calculate a sum of the selected Salary item.

Answer: A

QUESTION NO: 10

The validation unit for the Orders form is set to Item. This master-detail form contains an Orders block and a multirecord Order Items block. Why might you want to create a When-Validate-Record trigger on the Orders block in this form?

- A. to check that the shipping date for the order is not earlier than the order date
- B. to check that all items in the Order Items block whose Required property is set to Yes have values
- C. to perform some logic every time a user navigates to a different record in the queried block
- D. to check that all items in the Orders block whose Required property is set to Yes have values

Answer: A